

Smart Aluminium Front Doors / Front Doors with Sidelights

Assembly Instructions
Standard & Bespoke sizes



About your Aluminium Front Door

All products must be installed in accordance with accepted good trade practice (and in accordance with supplied instructions where applicable) and maintained in accordance with these procedures or else the warranty shall be void.

All Vufold external aluminium front doors, frames and sidelights are guaranteed for a full 10 years against the occurrence of manufacturing faults, the powder coating is guaranteed for 25 years, double and triple glazed sealed units are guaranteed for 5 years, and the hardware components are guaranteed for 1 year, all subject to correct installation and regular maintenance and care in use as detailed below.

Protective finish and maintenance

All our Aluminium front door sets are supplied fully powder coated in a satin finish providing a high quality and durable finish, unless otherwise specified.

To maintain the external aluminium powder-coated finish, wash regularly with soapy water and then dry off with a soft lint-free cloth. As a minimum, the external surfaces must be washed at least every three months, and monthly if within five miles of the sea or in an industrial area. Our general recommendation would be to wash the external aluminium every time you clean your windows, which should normally be more regularly than the minimum requirement.

The powder coating is not guaranteed unless the doors are installed at least 800 metres away from the sea.

We cannot accept any claims for damages, including scratches to the powder coating and aluminium reported 72 hours following delivery and / or after installation has commenced.

The threshold should be kept clear of debris and regularly cleaned to ensure the drainage channels remain clear, which can be done whilst cleaning the rest of the door set. The threshold should be stepped over when entering and leaving and not used as a step, to avoid damage to the threshold and seals.

Installation

Our aluminium front doors are supplied with all the essential items, most hardware factory fitted and everything pre-machined. This design allows for simple installation by a component DIYer or experienced trades person(s).

These products are heavy so a single person must never carry out the installation alone.

The outer frame needs to be securely fixed into the opening perfectly square and level on all planes.

Double and triple glazed sealed units

All glass is supplied to the GGF (Glass and Glazing Federation) standards. To reduce carbon emissions from the home and to keep heating and cooling bills down, the government has recommended that all manufacturers use special Low E thermal glass within the sealed unit to comply with Building Regulations Part L.

This glass is coated with a special substance to comply with the above and occasionally, and in certain light conditions may produce transient visual effects, this can sometimes look like a transparent film or haze, and make the glass appear cloudy. This is very infrequent and only affects a minority of door sets, but as a company we do have to comply with the new regulations which are for the benefit of all, and this is not a defect.

Due to demands for better thermal efficiency, it is normal for condensation to form on the outside of the glazing units, to the exterior side of the property. This demonstrates that the glass is performing as it should by reducing the transfer of heat from the internal side of the property to the external side of the property, this is not a defect. For any condensation forming to the inside of the property, this is normally due to high levels of moisture in the air and / or insufficient ventilation in the room, the moisture is then forming on the cold surface. If condensation is forming inside the glazing unit (between the panes of glass) it is likely that the glazing seal has been compromised.

Tempered glass means it has been toughened to be up to five times stronger than normal glass. It is unusual to break such strong glass, but sharp objects hitting the glass at certain points can cause breakage. Tempered glass is also known as safety glass. This means that if it breaks it will shatter into smaller fragments which are less likely to cause injury, unlike non-tempered glass which breaks into large, sharp fragments.

Laminated glass is also called safety glass and comprises of multiple layers of glass sandwiched together. Due to its high strength, this prevents the glass from breaking into large pieces. If the glass breaks, it will produce a 'spider web' effect similar to what is commonly seen in shattered car windscreens. Laminated glass will also increase the sound rating insulation.

About your Aluminium Front Door (Cont)

Glass must be regularly maintained and cleaned to stop break down of the glass or seals. This can be done using a mild solution such as washing-up liquid diluted in water. Do not use abrasive cleaning solutions as this may cause scratching.

Visual distortions caused by reflections in toughened glazing units are a natural phenomenon and not a fault.

Laminated, toughened or coated glass is acceptable if bubbles or blisters, fine scratches no more than 2.5cm long and / or minute particles are neither obtrusive or bunched. The glass used in sealed units is processed glass, therefore certain blemishes are unavoidable. More blemishes may be visible in laminated glass due to its layered construction.

For carrying out glass inspections, stand at least 3 metres away from the glazing, view at a 90 degree angle and look directly through the sealed unit(s). The glass must be viewed in natural daylight but not with the sun directly on it. Any moisture must be removed from the surface of the glass before inspecting.

Hardware components

The exterior hardware for your Vufold aluminium front door can deteriorate from everyday use, and also because of the weather and the local environment. That's why regular maintenance of your door hardware is even more important if you live in severe environments like coastal marine areas and some industrial locations. Even stainless steel products require maintenance to prevent deterioration in these environments.

We require that the below minimum maintenance is carried out as often as necessary to prevent deterioration. As a guideline, we recommend that this maintenance is done every three months if you live in a marine environment, or every three to six months if you live in a more general location otherwise your guarantee will not be valid.

Hinges

Using a microfibre cloth, wipe down the visible surfaces with warm soapy water and then rinse off by wiping with a clean, damp cloth. Applying a thin film of light machine oil or silicone spray, wiping with a dry cloth to remove any excess, will help to maintain the original lustre of the metal finish. Be careful not to get these liquids on the door and frame as this can cause staining.

Locks

All moving parts should be lubricated using a silicone spray and the surface cleaned with a soft damp cloth to ensure there is not a build-up of dust or debris that can damage the surface areas.

If you experience problems with locking or unlocking the doors, first eliminate actual lock problems by opening the access door and checking if the locks work in the open position. If the lock operates as it should then this would indicate an alignment issue.

Handles, letter plates and letter boxes

The surface should be cleaned with a soft damp cloth to remove any dust or grime, taking care not to scratch the surface.

For stainless steel furniture, we recommend you use only the stainless-steel care kit included with your door. Before you begin, carefully mask the powder coated finish of your door using either masking tape or decorator tape. Use a small amount of the cleaning fluid on a microfibre cloth to clean the hardware, followed by the care oil and buff to a shine.

For more stubborn dirt or stains use mild, non-scratching abrasive powders such as typical household cleaners. These can be used with warm water, sponges or clean cloths. For more aggressive cleaning a small amount of vinegar can be added to the powder.

Carbon steel brushes and steel wool should be avoided as they may leave particles embedded in the surface, which can lead to rusting. Cleaning should always be immediately followed by rinsing in clean hot water and the surface then wiped completely with a dry towel.

To maintain any stainless steel product in the best condition, we recommend routine cleaning once a month and more often in areas subject to heavy soiling or frequent use.

Door operational adjustments

When your door is first installed, it should not require any adjustment. All our aluminium front doors have been fully assembled at our production facility, and checked for smooth operation, including the locking and unlocking of the door.

From time to time, due to changes in the seasons or because of wear and tear in use, or if the lock is difficult to operate, it may be necessary to carry out some hinge adjustments.

If you experience any difficulty operating your doors, including, opening, closing and locking of your doors, do not continue to use your doors as this may cause further issues and damages and invalidate your guarantee.

Auto locks have an auto latch feature for added security. Please be aware, certain users may find it more difficult to operate when compared to a manual lock due to operation via a thumb turn cylinder only and lacking a traditional lever handle.

Contents

Your Vufold External Aluminium Front Door set is supplied as a complete set, already assembled with the glass and the majority of the hardware already fitted.

Please check the contents of the packages to ensure all parts are present before beginning removal of previous door and assembly of your new door.

Aluminium door and frame components

Fitted

Qty 1 Door
Qty 1 Frame head
Qty 2 Frame jambs, Left (1) and Right (1)
Qty 1 Threshold (aluminium)

Loose (Optional extras)

Qty 1 Glazing unit (door)
Qty 1 Drip cill
Qty 2 Cill end caps
Sidelight(s) and Coupler(s) (Couplers will be pre-fitted to the sidelight(s) and sidelight(s) will be temporarily glazed)

Standard hardware

Fitted

Qty 3 Hinges and cover caps
Qty 1 Multi-point lock
Qty 1 Euro cylinder & keys
Qty 2 Top (1) and bottom (1) hook keep
Qty 1 Centre lock keep

Loose

Qty 1 Pair lever handles

Upgraded hardware options

Fitted

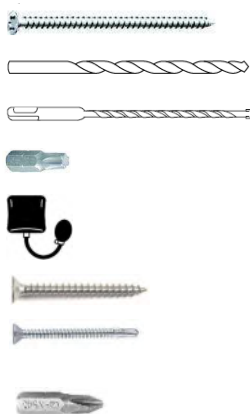
Qty 3 Hinges
Qty 1 Multi-point lock
Qty 1 Euro cylinder & keys
Qty 1 Lock keep

Loose

Qty 1 Pair lever handles
Qty 1 Single or double bar handle (optional upgrade)

Installation fixing kit (loose)

Qty 12 90mm concrete screws
Qty 1 6.5mm HSS drill bit
Qty 1 6.5mm SDS masonry drill bit
Qty 1 1/4 Hex T30 insert bit
Qty 4 Air wedges



Qty 10 Lock keep screws
Qty 2 25mm self-drilling screws (for orders with an optional cill only)
Qty 1 1/4 Hex PH2 insert bit (for orders with an optional cill only)



Orders with sidelights

Qty 8 Self-tapping screws (per sidelight)
Qty 1 Pack glazing packers



Single Bar handle fixing kit

Qty 1 12mm drill bit
Qty 2 80mm bolts
Qty 2 washers
Qty 1 roll of tape
Qty 2 bolt covers

Double Bar handle fixing kit

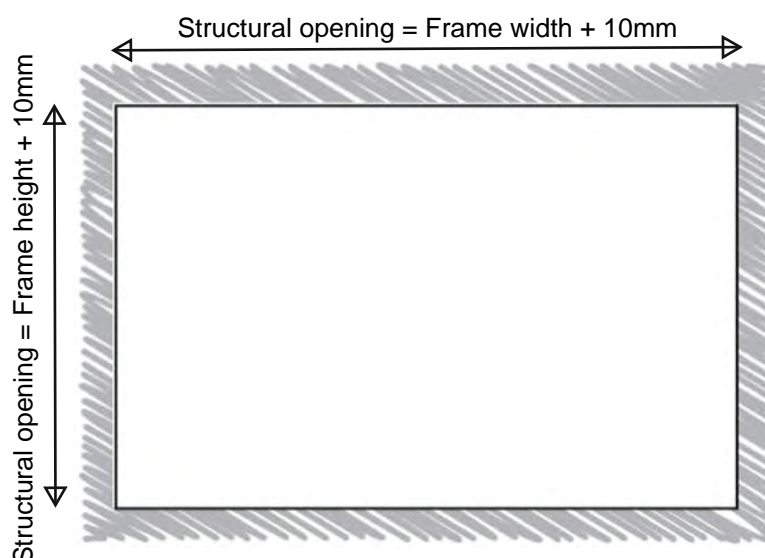
Qty 1 12mm drill bit
Qty 1 roll of tape
Qty 1 double bar fixings

Preparing the site

Before preparing the site and commencing the installation, double check the opening is the correct size and the items you've received are to the correct specification including size, handing, colour and glass before discarding any packaging. This includes any components that may be supplied fitted or loose. Check the items are free from damage.

IMPORTANT; Do not remove the existing door until all checks have been completed and you are happy your new door is ready to be installed.

When preparing the site, please prepare the overall opening to be 10mm more in height and in width than the outside assembled frame size. It is essential that all the internal surfaces of the structural opening are level before installation. Please ensure that all structural opening and outer frame dimensions are correct for installation before proceeding as the door set must be installed square and level into the opening.



Fitting the handles

Your lever and/ or long bar handles will be supplied loose and simply require attaching to the door using the fixings provided.

Installing the drip cill (Optional extra)

Please skip this step if you have not ordered a drip cill.

First locate the drip cill and the Qty 2 cill end caps and glue the cill end caps onto each end of the cill.

Before fitting the cill into position, ensure the structural opening has been cleared of any debris, removing any old silicone, screws / nails if present as the cill will require sitting perfectly level.

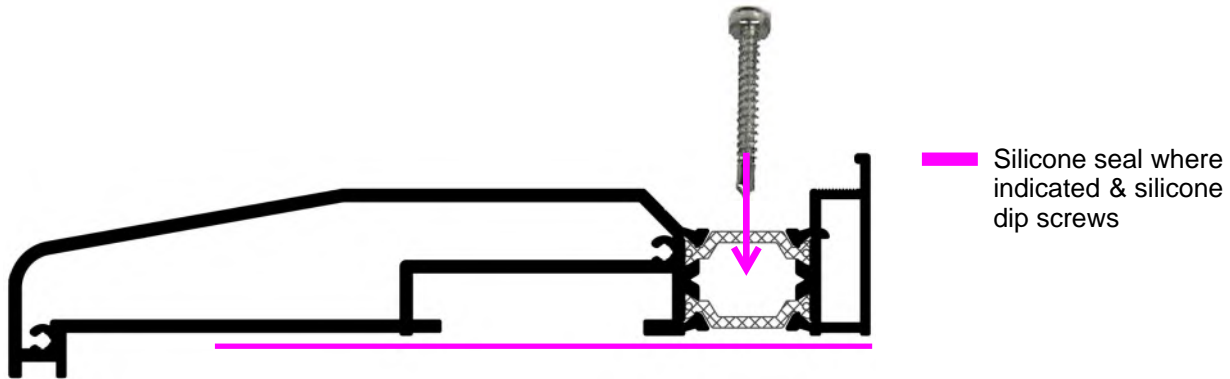
Place the cill into the opening and level using packers if required until it is completely flat and level. Carefully remove the cill and silicone the packers into place and apply a bead of silicone for the cill to sit on. Reposition the cill and ensure it is flat and level.

Temporarily secure the cill in position using Qty 2 of the direct frame fixings provided. Position 1 fixing at each end of the cill where the outer frame jambs will be positioned.

Installing the drip cill (Optional extra- Cont)

Drill through the back edge of the cill using the HSS drill bit and then use the SDS drill for the brickwork.

IMPORTANT: All fixings must be silicone dipped prior to securing to the opening.



Front door sets with optional sidelights

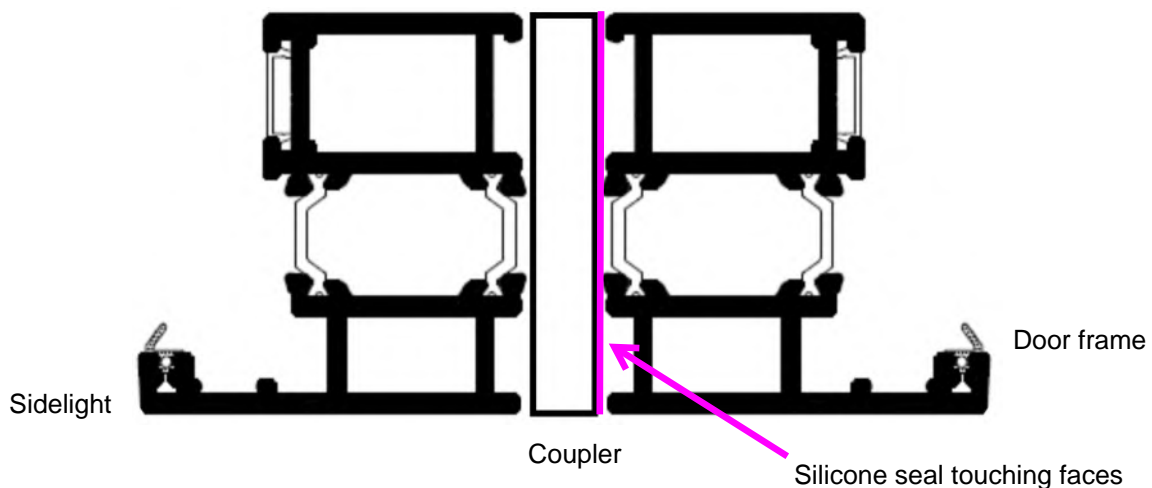
Door sets with sidelights come with the glazing units temporary fitted in the sidelight(s), to enable fixings to be hidden when securing to the brickwork opening and outer frame.

Please note; sidelights are internally beaded and so the beaded side should face to the inside of the property. To attach the sidelight, remove any temporary beading from the inside face of the sidelight, and the glazing unit.

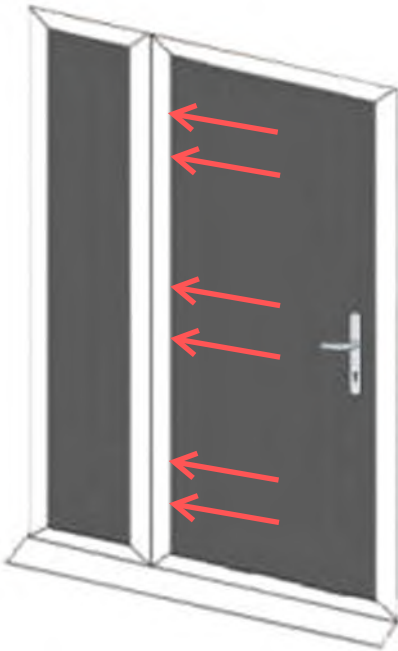
IMPORTANT- Glazing units can be sensitive to rapid changes in temperature. Ensure the glazing unit is set down on a protective surface and avoid placing directly onto concrete etc. paying particular attention to the edges and corners of the glazing units which are most vulnerable to breakage. We will not accept any claims for scratched, damaged or smashed glass that has not been reported on delivery, and before installation has commenced.

With the aluminium coupler pre-fitted to the sidelight, align the sidelight and door frame, ensuring they are plumb and level and push the frame sections together. Once happy, apply silicone to the touching faces and position quick grip clamps up the edge of the frame and sidelight to ensure the frames do not distort.

Internal facing side



Front door sets with optional sidelights (Cont)

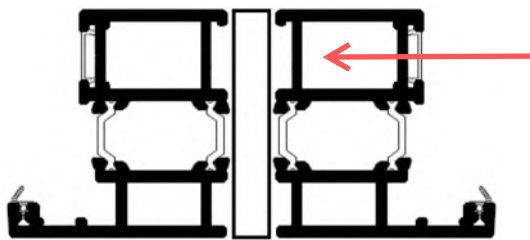


Shows hinged side fixing positions
(above and below each hinge)

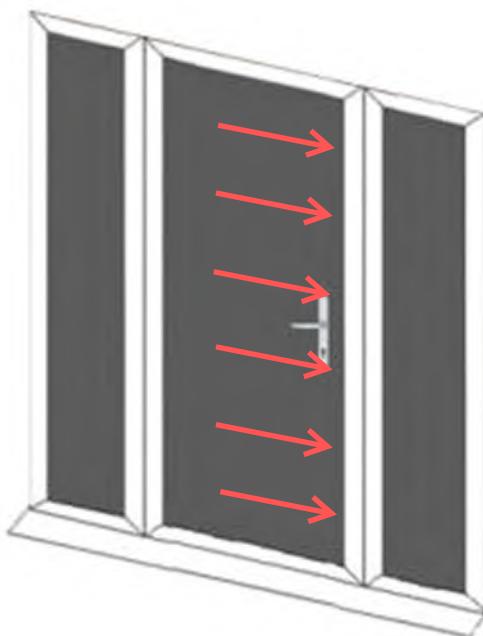
To fix the outer door frame to the coupler / sidelight(s). Pilot six 3.5mm holes in the frame jamb(s) and coupler, 1 fixing above and below each hinge plate.

Use the self-tapping screws provided to secure the door frame to the coupler / sidelight(s).

The correct fixing position is shown below.



IMPORTANT: Do not fix through the thermal break on the door frame.



Shows lock keep side fixing positions
(100 - 150mm from the top and bottom of the frame, remaining fixings evenly spaced)

For double sidelight orders, when fixing the sidelight to the lock keep side, ensure the highest and lowest fixings are approx. 100 – 150mm from the top and bottom of the frame.

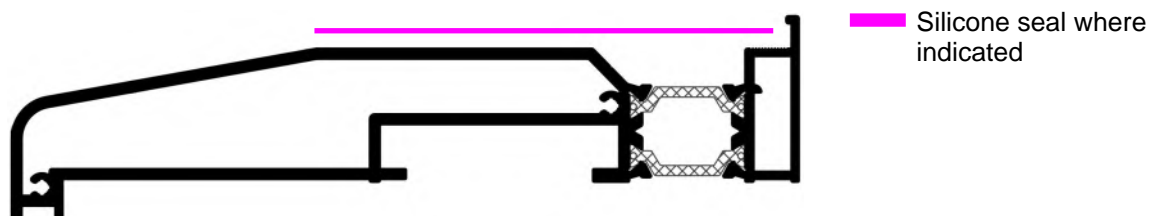
The remaining 4 holes can be spaced evenly behind the lock keep.

Installing the assembled frame

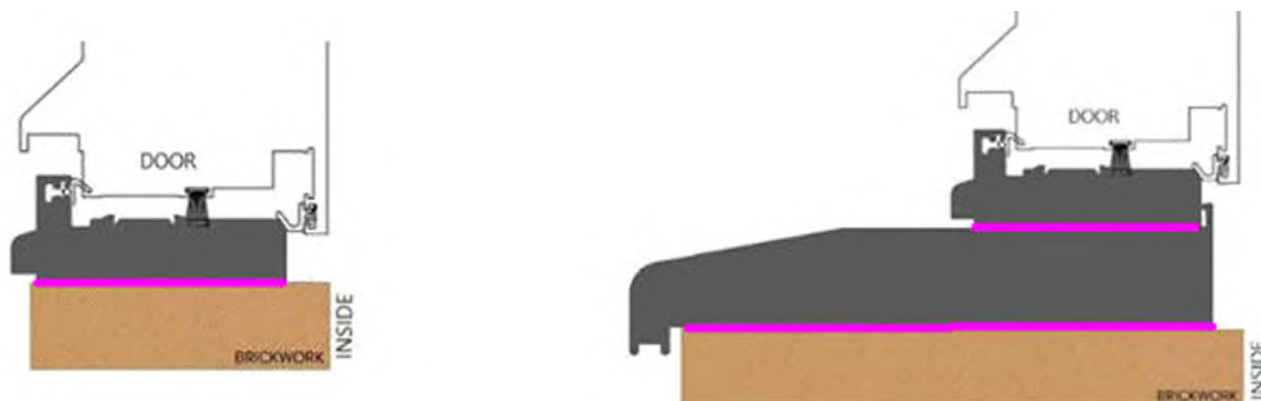
IMPORTANT: During the installation it is advised to repeatedly check the alignment and squareness of the outer frame. Measure the distance across diagonally to check squareness. Without these checks the installation may be unsatisfactory, causing damage to the door and incorrect operation.

Do not open the door until it is held securely by the air wedges in the aperture.

Before lifting the frame into the opening and sitting it on top of the cill, silicone all along the very back edge, and both sides of the cill creating a bed for the door frame and threshold to sit on.

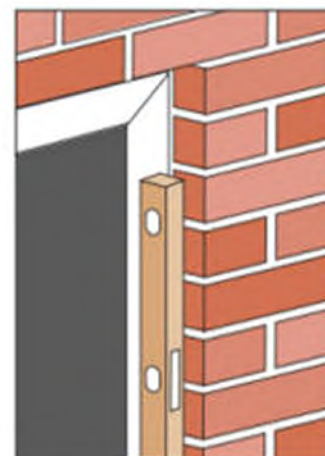


Carefully lift the door set (two people required) and fit it into the brickwork opening, resting the frame and threshold on the cill or brickwork and a bed of silicone.



IMPORTANT: The frame should not be pushed tight back to the plaster line as this can lead to the door being fitted with a twist.

Use the air wedges provided to temporarily hold the door set in the brickwork opening. Adjust the door set in the opening by inflating / deflating the air wedges. Use a spirit level / laser level to ensure it is square and level in every plane.



Installing the assembled frame (Cont)

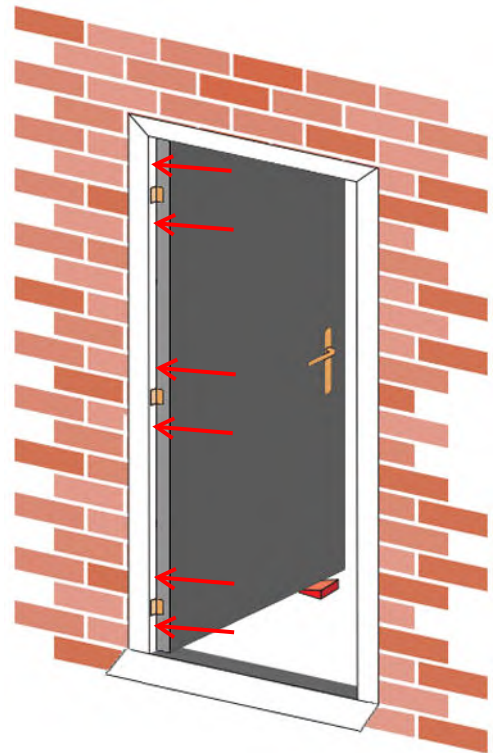
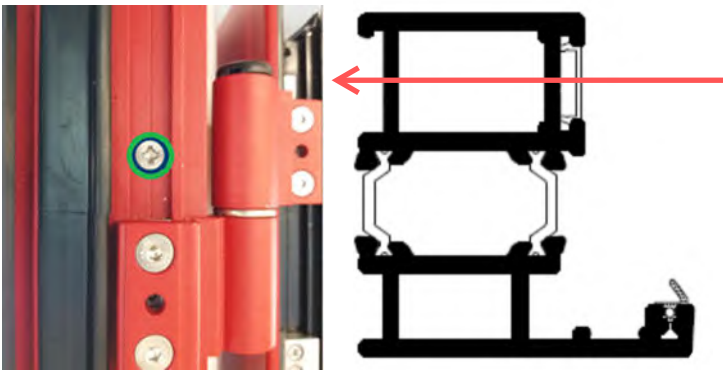
Once you are confident the frame is perfectly square and level, insert the additional air bags to securely hold the door in place.

It is now safe to open the door.

Re-check the levels before fully fixing the frame into the brickwork.

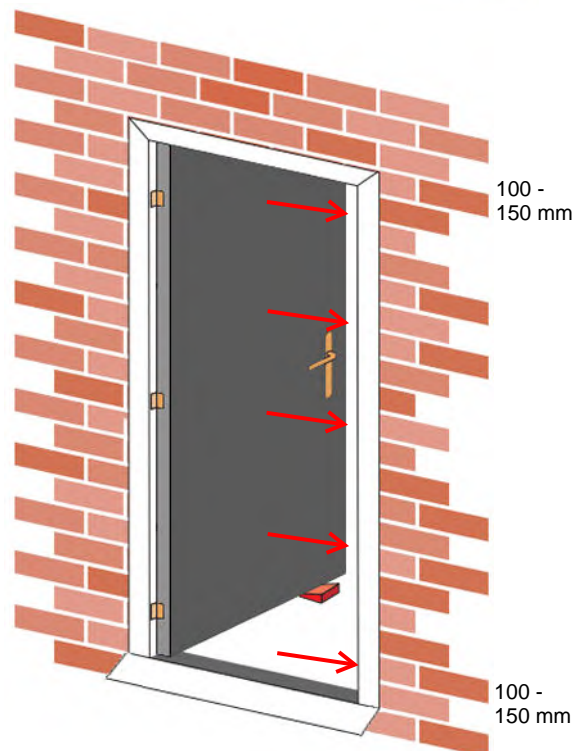
Secure the hinge side jamb first. Starting at the top hinge, drill through the aluminium and into brick work ensuring there is a fixing directly above and below each hinge (6 fixings in total). Do not drill through the polyamide (thermal break).

- 1) Use the 6.5mm HSS drill to drill holes in the frame jambs.
- 2) Use the 6.5mm SDS masonry drill to drill into brickwork.
- 3) Use the Torx 1/4 hex T30 Bit to screw in the direct frame fixings.



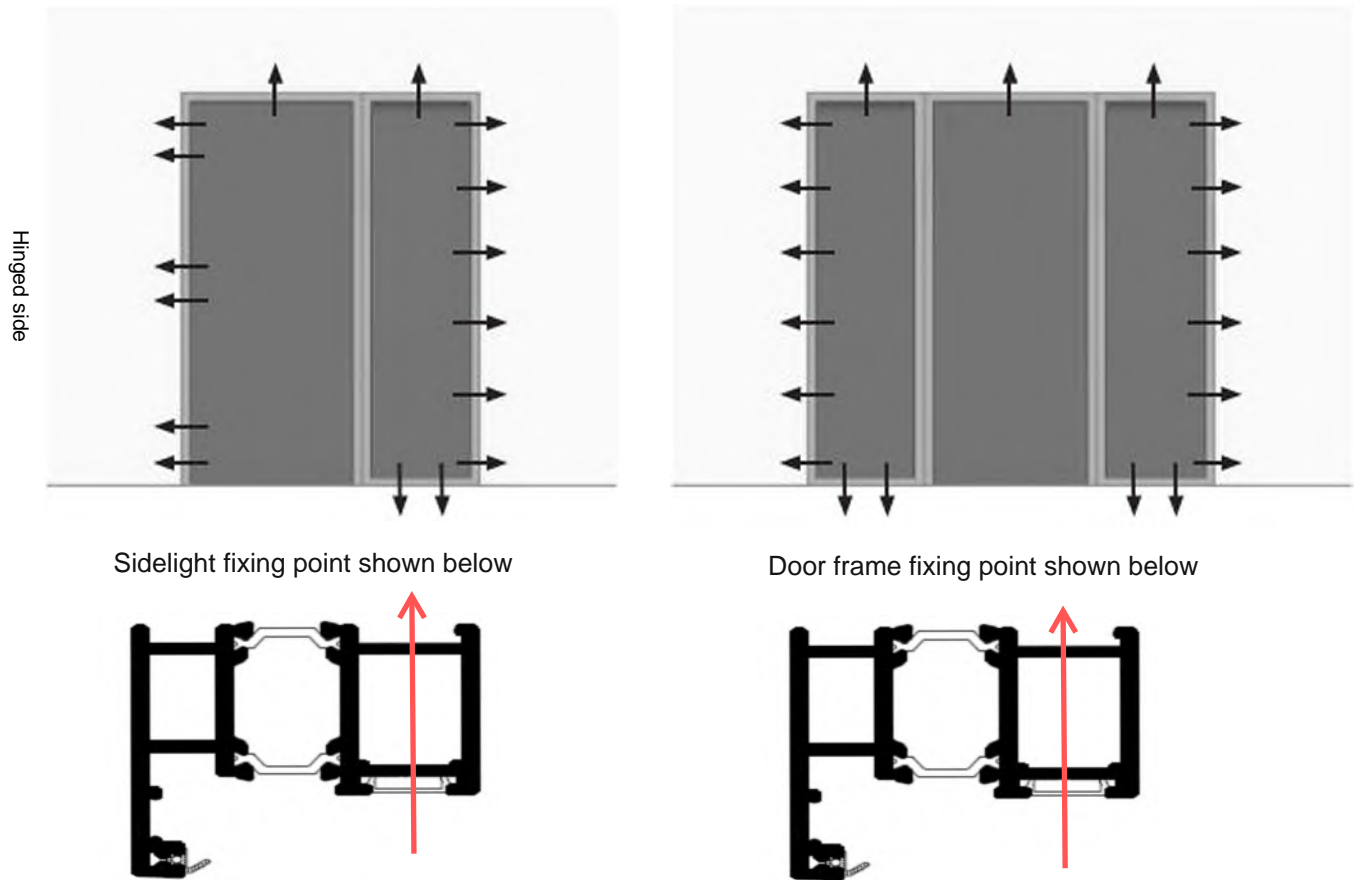
Before fixing the lock side jamb, check the door is operating correctly, including the locking and unlocking of the door. If not, realign the door using the air wedges and re-test the operation.

Once it is operating as expected, remove the lock keep and fix the lock side jamb into the opening. 2 of the direct fixings should be installed 100 - 150mm from the top and bottom of the frame and then 3 fixings evenly spaced (5 fixings in total). The lock keep can now be re-fitted and final fixed.

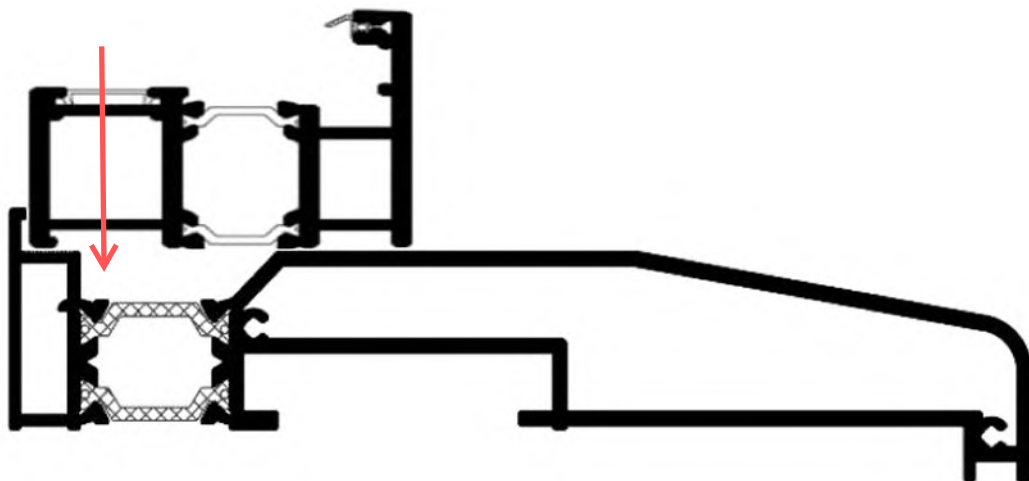


Installing the assembled frame (Cont)

When installing a front door with sidelights, the below shows recommended fixing points.



Sidelight fixing point into drip cill shown below. Use Qty 2 self-tapping screws provided per sidelight.

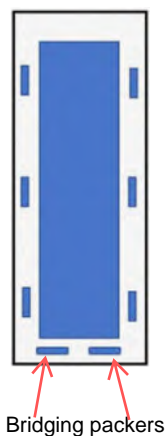


IMPORTANT: Fixings at the bottom must be silicone dipped

Glazing doors and sidelights

For orders with sidelights, the sidelights are supplied with the glazing temporarily fitted for the fitter to glaze on site.

IMPORTANT: The sidelight must be glazed by an experienced glazier. Do not proceed with the glass installation if you are not experienced in glazing.



Flat glazing packer



The opposite is a general guide and recommended packer placement, however, it is the glaziers responsibility to ensure the glass has been packed and supported sufficiently with the correct type and placement of bridging and glazing packers.

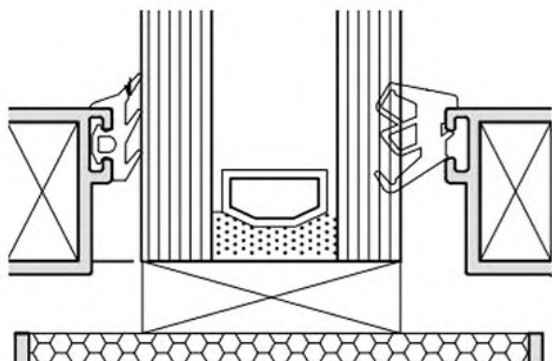
For orders with sidelights, the sidelights are supplied with the glazing temporarily fitted for the fitter to glaze on site.

IMPORTANT: The sidelight must be glazed by an experienced glazier. Do not proceed with the glass installation if you are not experienced in glazing. The opposite is a general guide and recommended packer placement, however, it is the glaziers responsibility to ensure the glass has been packed and supported sufficiently with the correct type and placement of bridging and glazing packers.

Sidelight diagram

Once the glass has been securely fixed in place, install the glazing gaskets and cassette. See diagram below;

Place the glazing unit on top of the pre-fitting plastic bridging packer(s), additional bridging packers can be placed at the bottom / under each glazing unit if required (not supplied). Now fully secure the glazing unit(s) in place at the top and sides with the flat glazing packers provided.

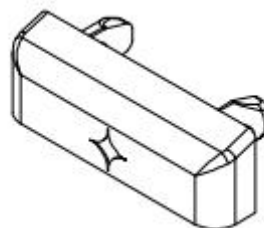


Final finishing

The foam surround supplied can now be inserted around the door frame to cover any direct fixings.



Fit the external drainage caps on to the threshold in the pre-machined drainage slots.



Single bar fitting guide

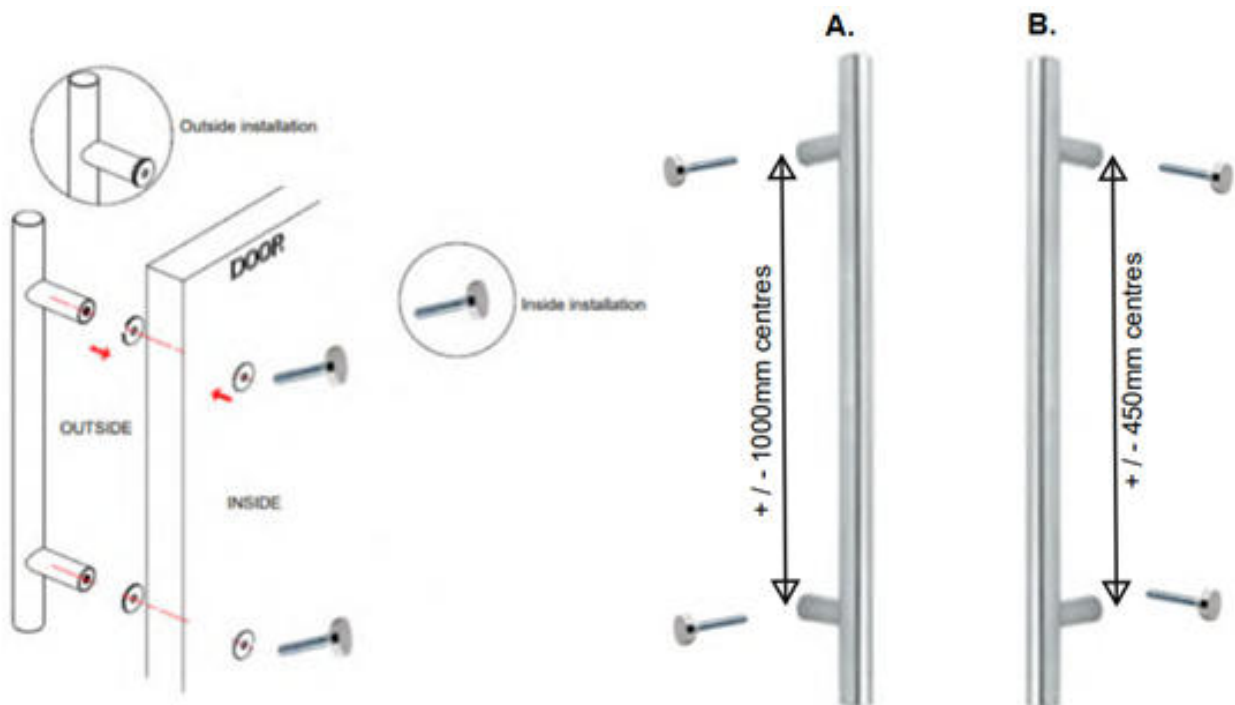
Your bar handle will be supplied loose and the door will require drilling for the 2 fixing points before securing the handle to the door.

Before fitting the long bar handle, ensure the handle location on the door will not prevent any access to any other door furniture / hardware.

Check the 'centre' distance on your handle. Using 2 strips of masking tape provided, mark the two-hole positions on the internal and external face of the door. See diagram 'A.' for Long Bar or diagram 'B.' for Short Bar.

Drill holes in the door using the 12mm drill bit provided. Do not drill all the way through the door and do not exit through the face of the door. Drill from either side of the door.

Insert the 80mm bolt provided through the plastic washer and then through the door, threading on another washer before finally screwing into the handle and tighten. Screw the internal metal bolt cover onto the 80mm bolt head to finish.



Double bar fitting guide

Your bar handles will be supplied loose, and the door will require drilling for the 2 fixing points before securing the handles to the door.

Before fitting the long bar handles, ensure the handle location on the door will not prevent any access to any other door furniture / hardware.

Check the 'centre' distance on your handle. Using 2 strips of masking tape, mark the two-hole positions on the face of the door.

Drill pilot holes in the door using the 12mm drill bit provided.

Arrange the fixings as shown in the diagram below. Note: The pull bar with the bolt thread is installed to the outside. Once the bolt, washers and brass ferule have been correctly installed, tighten the bolt up using a Philips screwdriver until the external handle is secure.

Fit the inside handle over the protruding brass ferules until it is tight up against the surface of the door, then secure in position by tightening the four grub screws with an Allen key.

